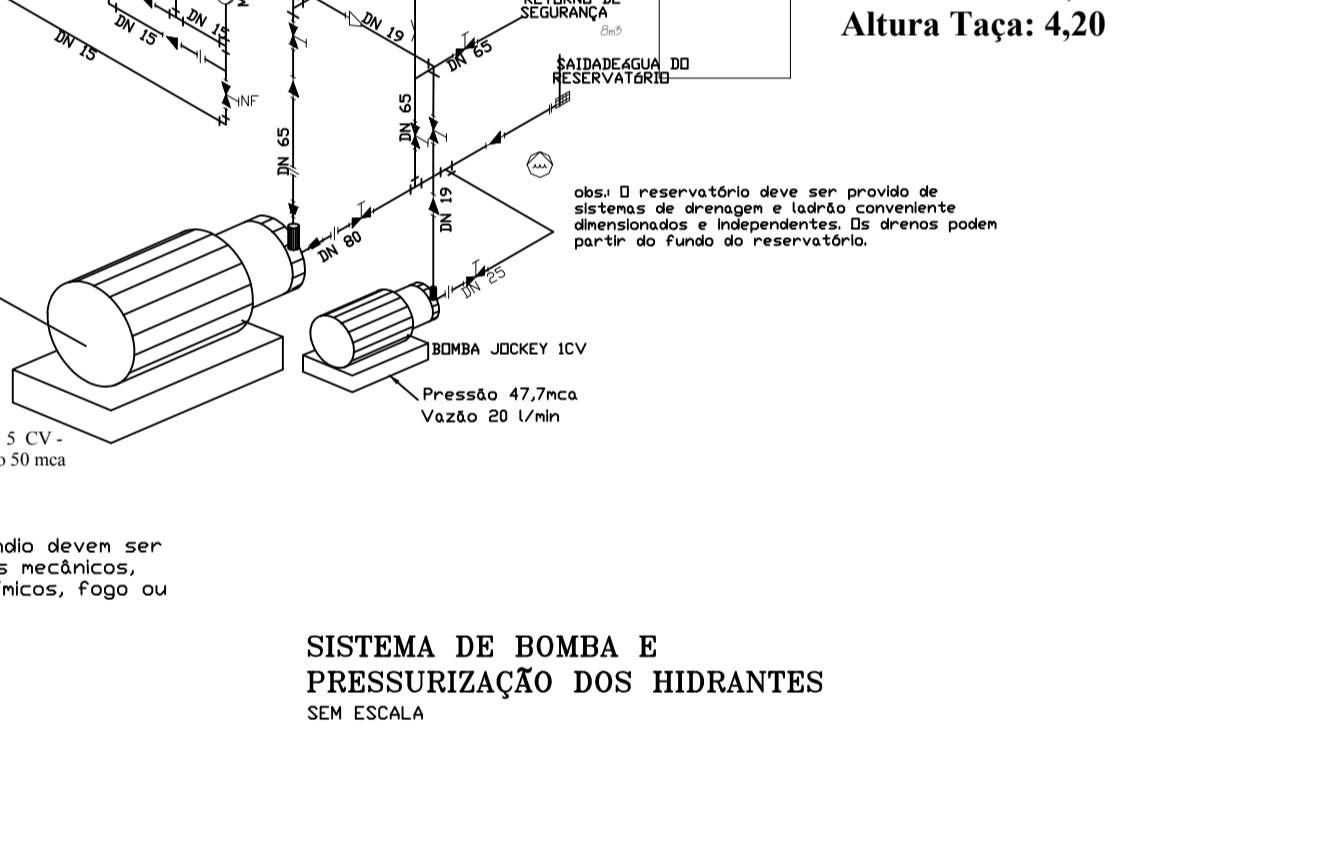
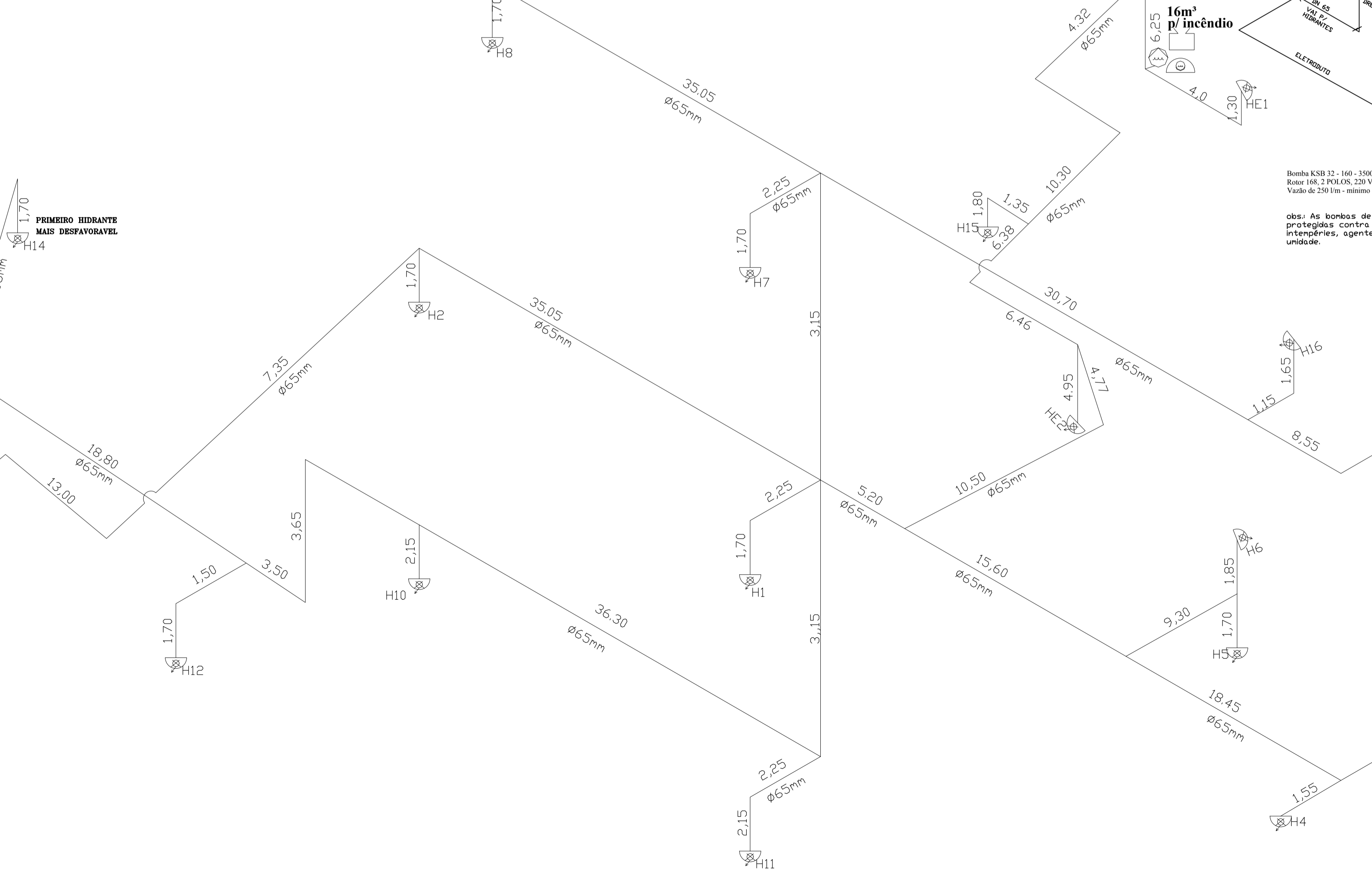
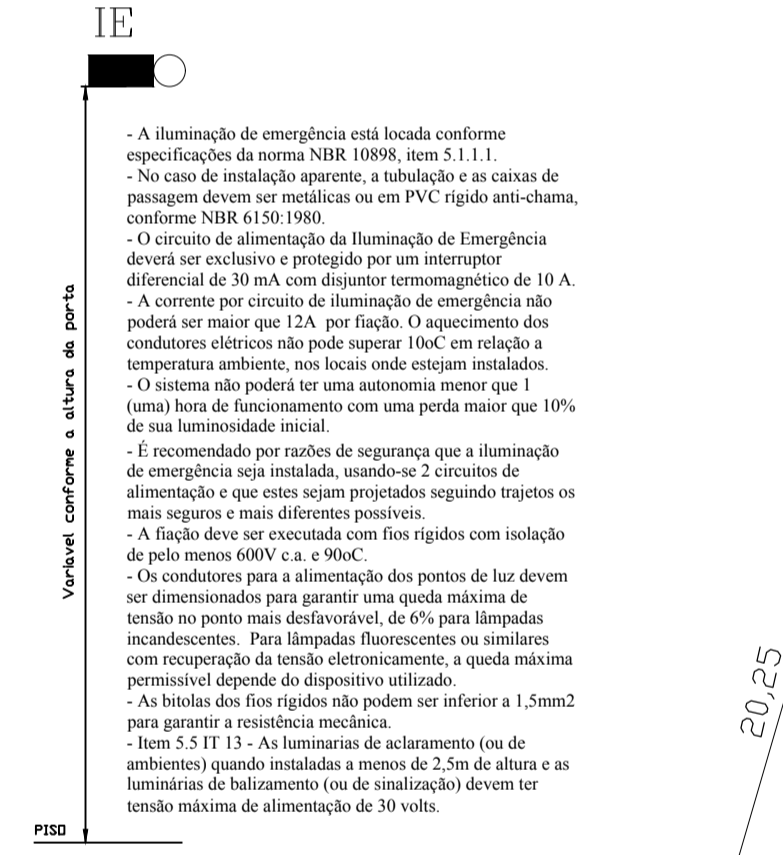
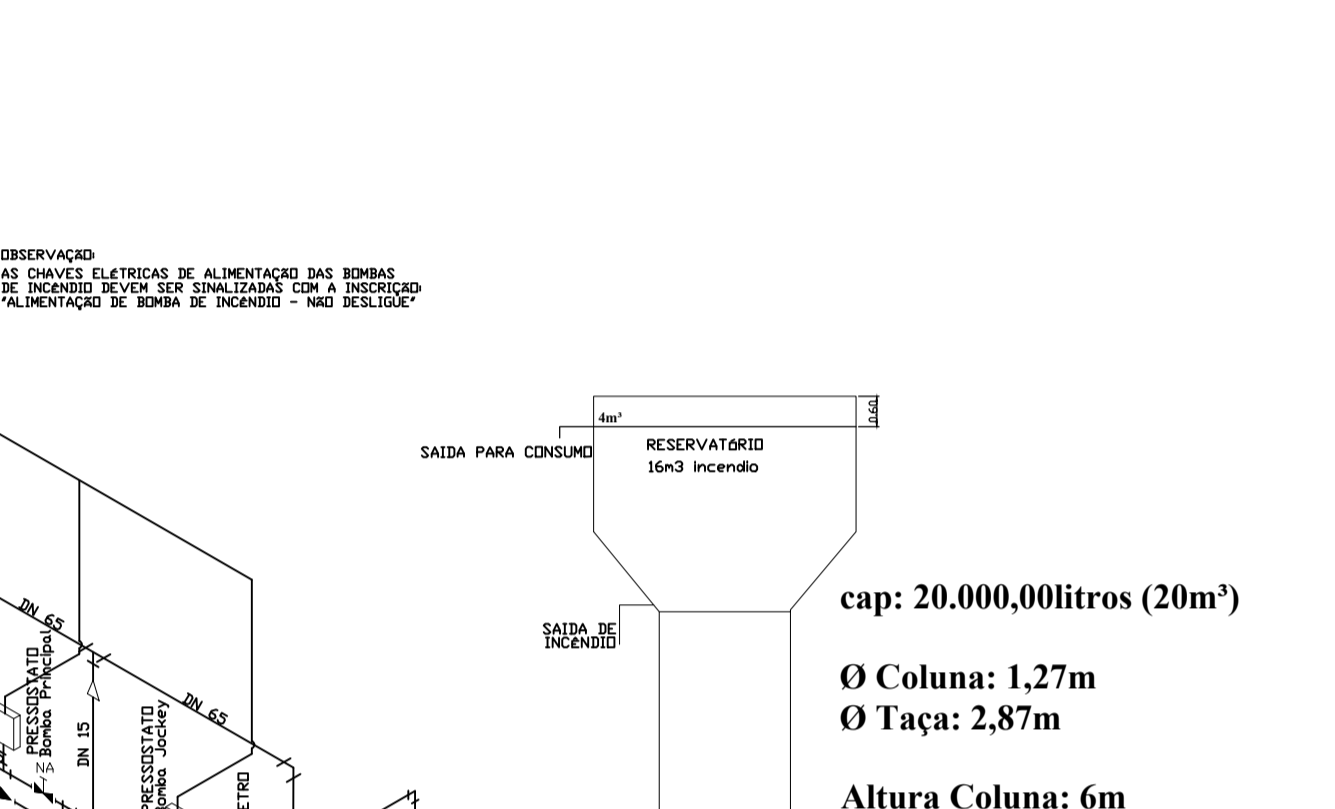
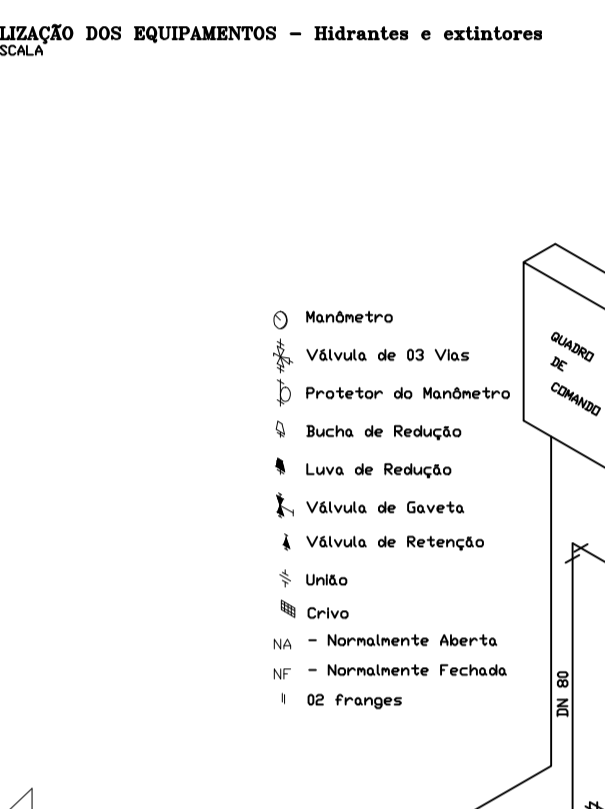
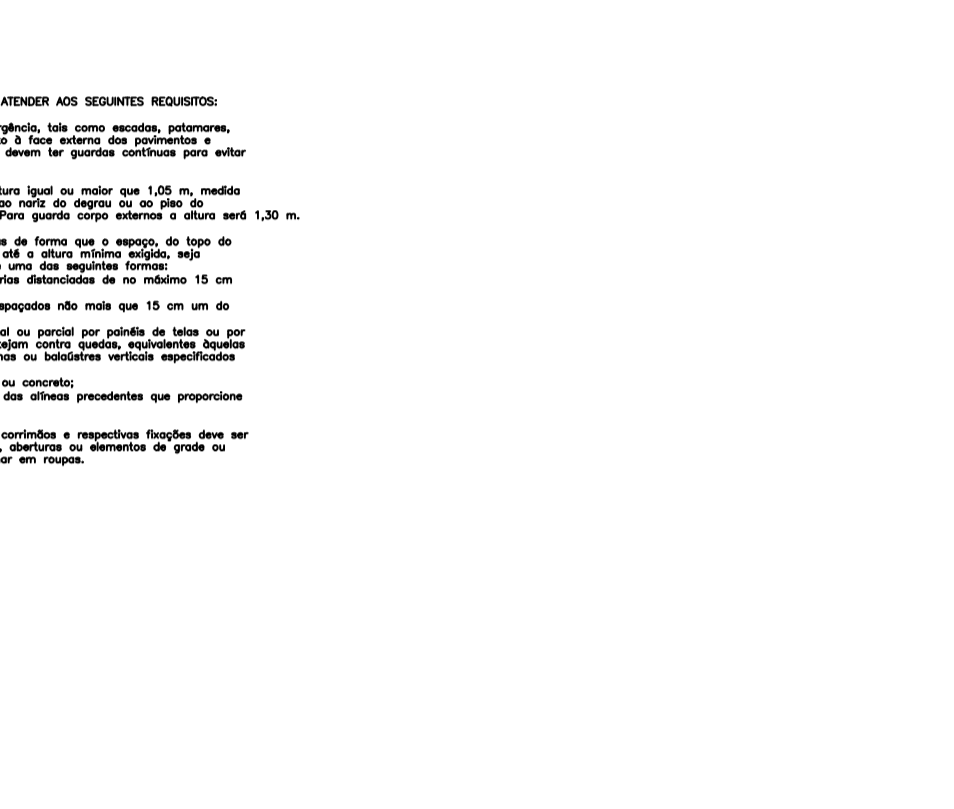
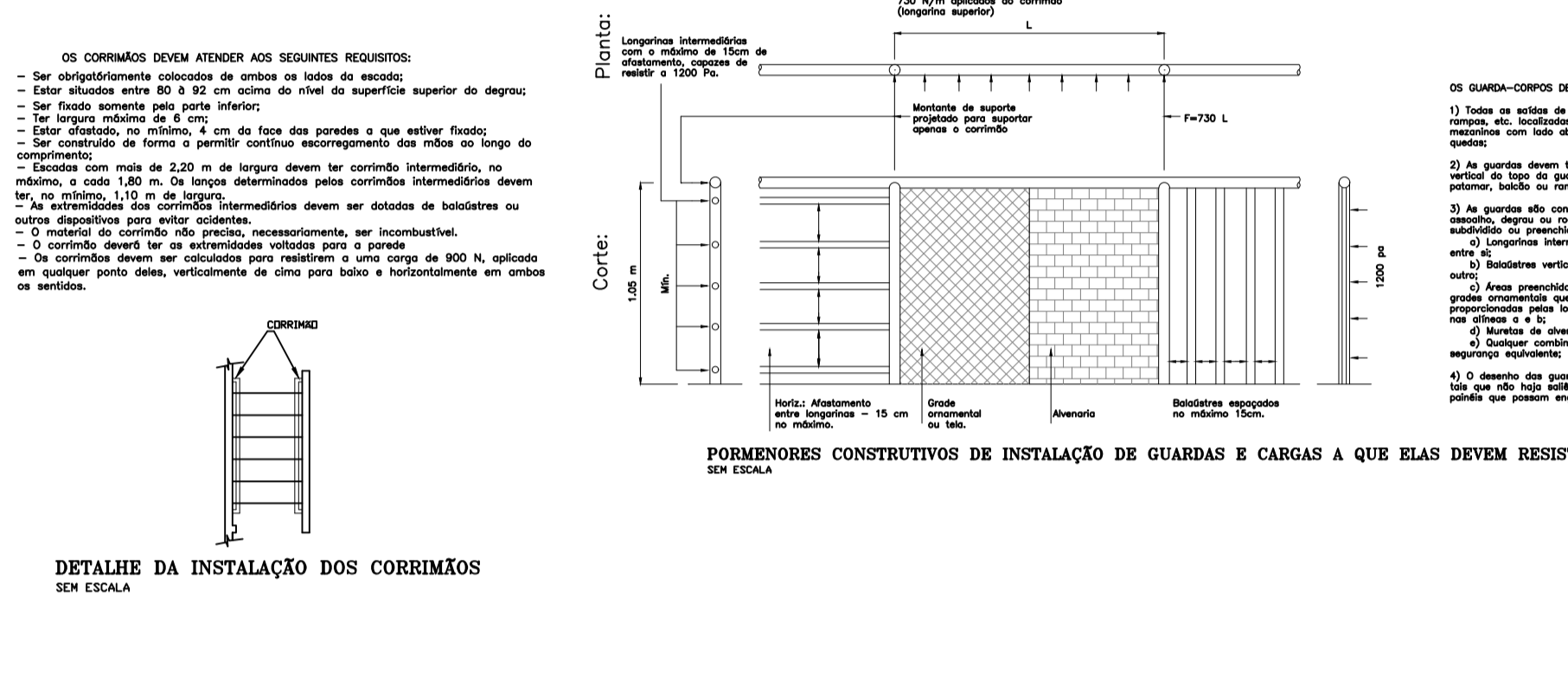
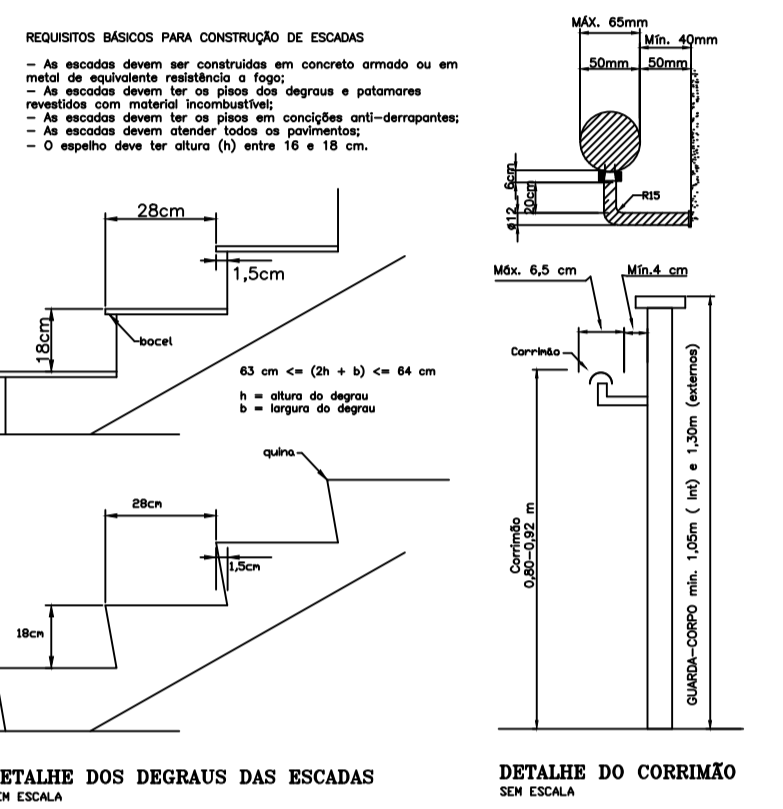
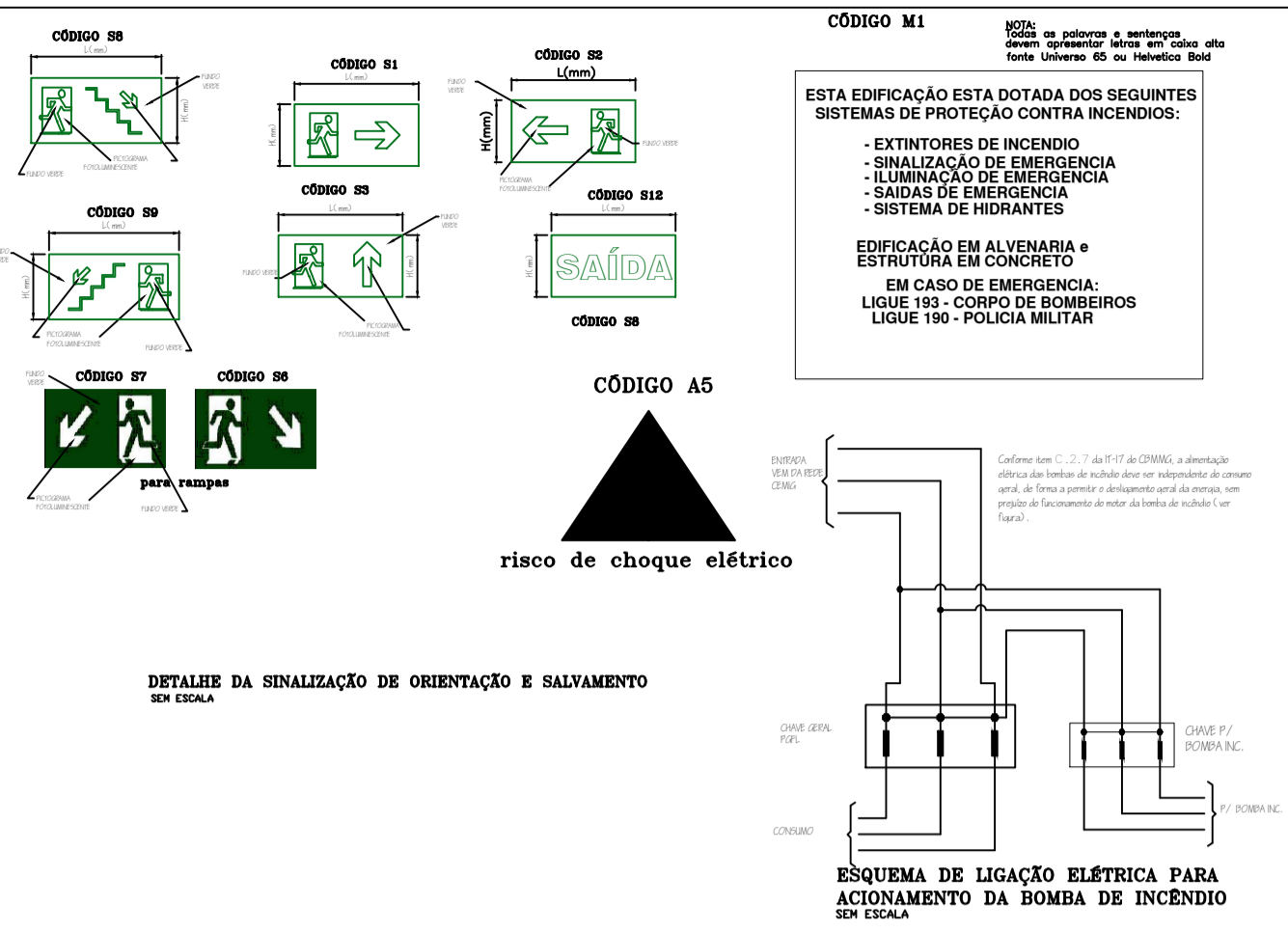
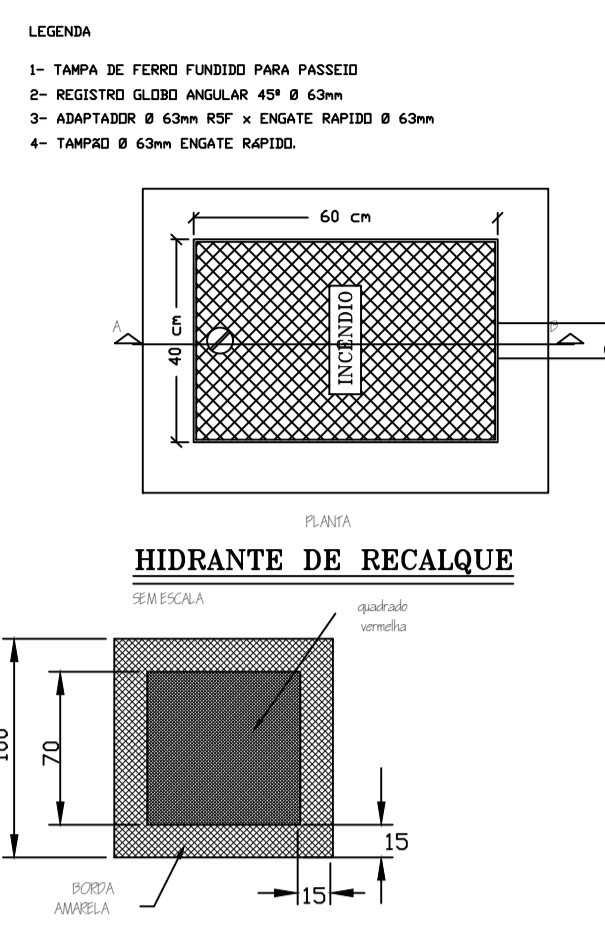


NOTA:
Hidrante de Recalque - Válvula angular diâmetro 2 1/2", corpo em latão, pressão mínima de trabalho 13,8 Kg/cm² (200PSI), classe 300, vedação em borracha (etileno-propileno), conexão de entrada de 2 1/2", rosca interna 1 1/2" (BSP), conexão de saída rosca externa 5/8", haste ascendente com castelo quadrado para uso específico do CBMMG, com chave especial.



RESP. TÉCNICO		
FOLHA 01/08	PROJETO COMPLETO	ESC. INDICADA
ASSUNTO	PROJETO TÉCNICO DE PROTEÇÃO CONTRA INCENDIO	
ISOMETRIAS	OCUPAÇÃO SERVIÇOS DE SAÚDE E INSTITUCIONAIS H3	
DETALHES DOS SISTEMAS DE COMBATE E PROTEÇÃO CONTRA INCENDIO E PANICO	LOCAL: R PRES TANCREDO NEVES, 500 - BOM PASTOR - VARGINHA/MG	
	PROPRIETARIO: FUNDACAO HOSPITALAR DO MUNICIPIO DE VARGINHA FHEMUV	
	RESP. TÉCNICO CARLOS ANTONIO DE PALVA	CREA: 55279/MG
	AREA DO TERRENO: 9.678,96 m ²	AREA CONSTRUIDA: 8.908,96 m ²
	DESENHISTA: Dona P. Tavares	